



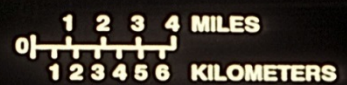
# Carolina Dogs

Dr. I. Lehr Brisbin

SRS Citizens Advisory Board

May 23, 2016

---

































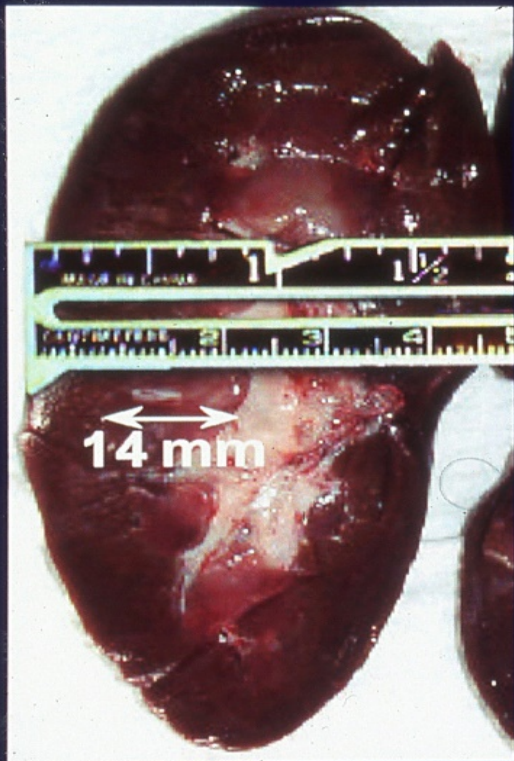






# RENAL MEDULLARY THICKNESS

"ISLAND" OSSABAW



$3.27 \pm 0.23$

YUCATAN or  
"MAINLAND" OSSABAW



$2.04 \pm 0.10$  or  $2.24 \pm 0.14$













# Lipid Metabolism/Obesity

Martin et al. (1973)

(Proc. Soc. Exptl. Biol. Med. 143:198-203)

# Science

7 February 2003

Vol. 299 No. 5608  
Pages 765-960 \$10

A scanning electron micrograph (SEM) of adipose tissue, showing a dense network of yellowish, fibrous structures (likely collagen fibers) surrounding large, rounded, reddish-brown lipid droplets. The overall appearance is that of a complex, interconnected meshwork.

**Obesity**







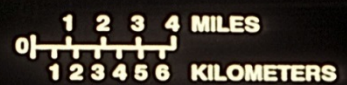
## Insulin and Growth Hormone

Wangsness et al. (1977)  
(Amer. Jour. Physiol. 233: E104-108)













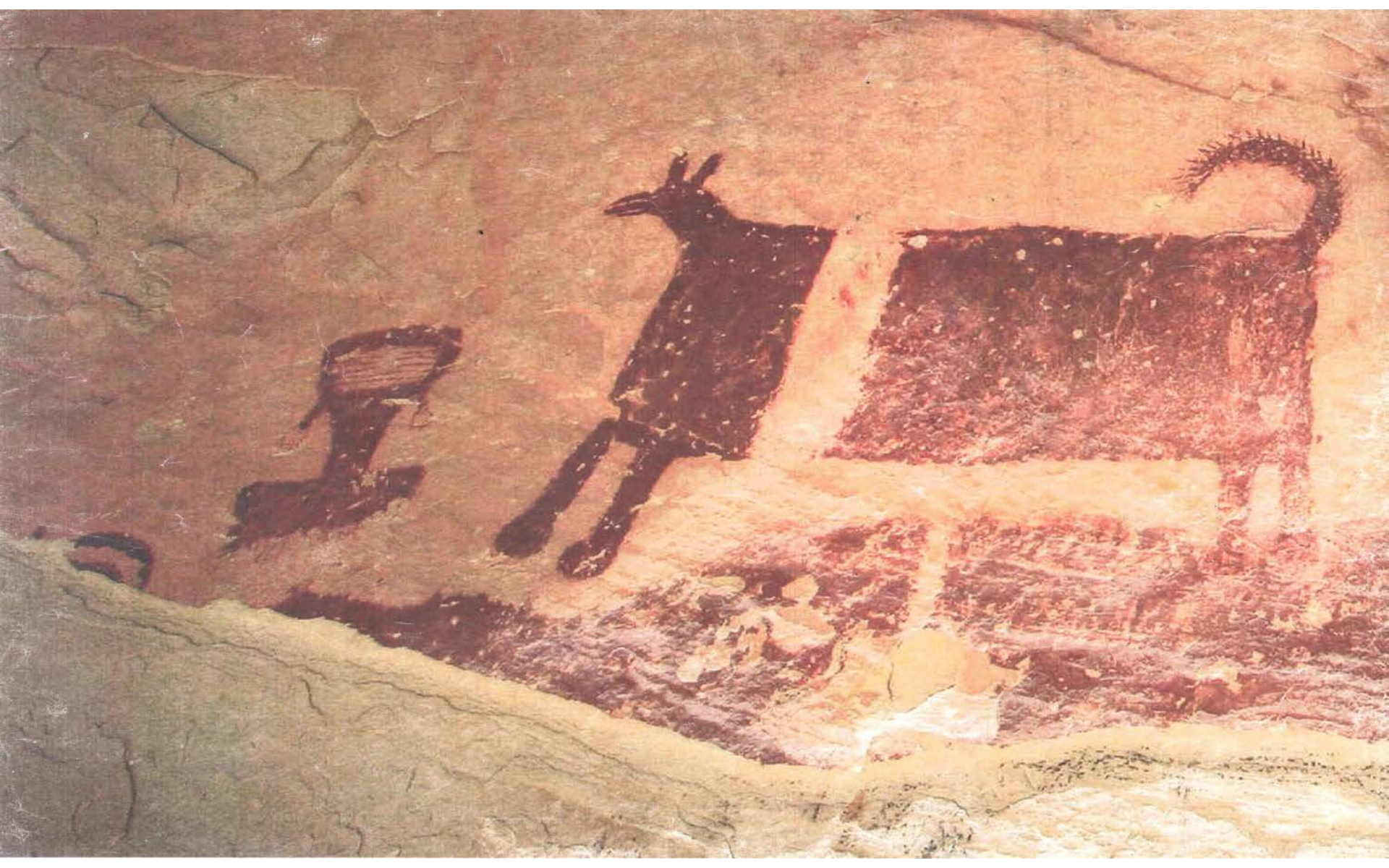












































©dbbriishinphotography











































38AK228  
G S LEWIS WEST SITE  
PROV. 104  
FEATURE 233  
12 MAY 1989









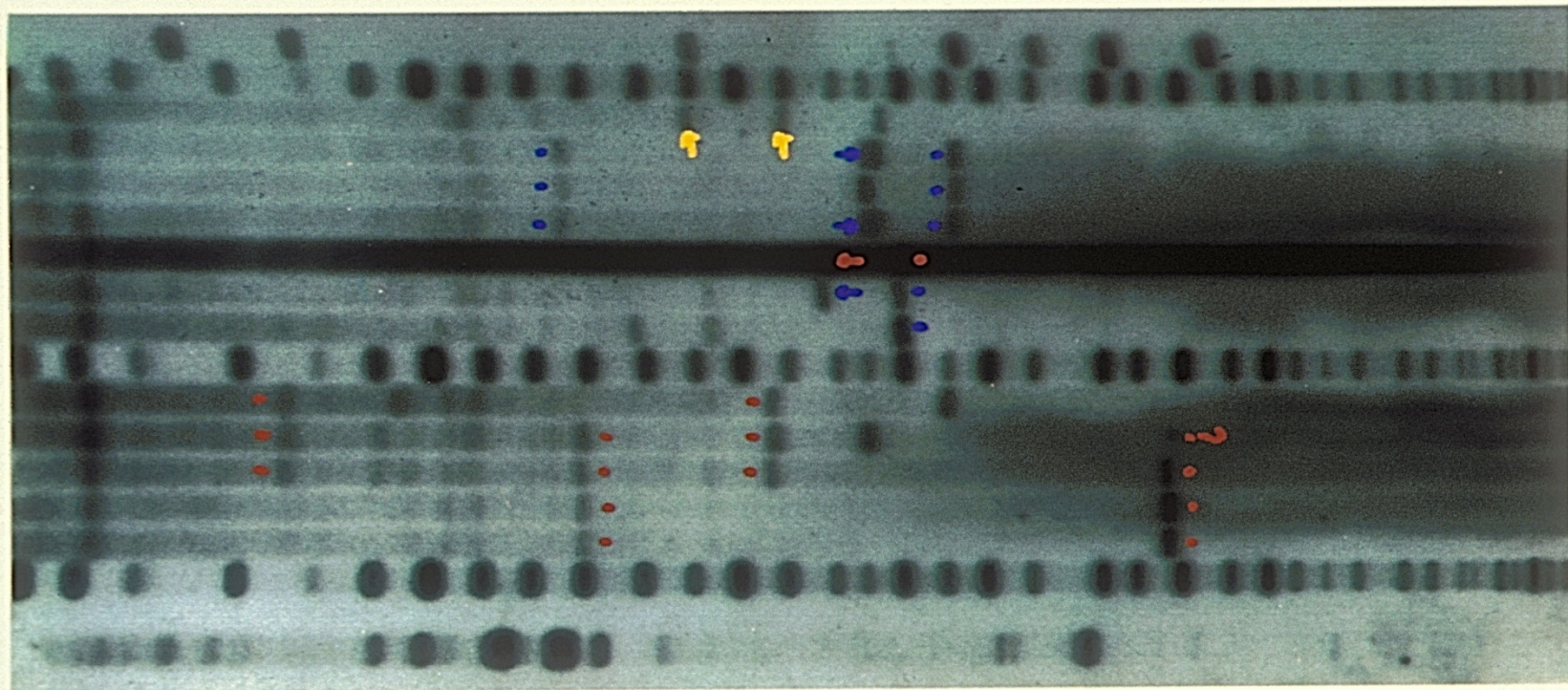


Lewis Site

38AK228W

Prov. 31 & 26/Feat. 178





MWSS  
Spot  
Landrace  
Landrace  
Landrace  
Tamworth  
Tamworth  
Tamworth  
MWSS  
Hybrid  
EWB  
EWB  
EWB  
EWB  
MWSS  
Control











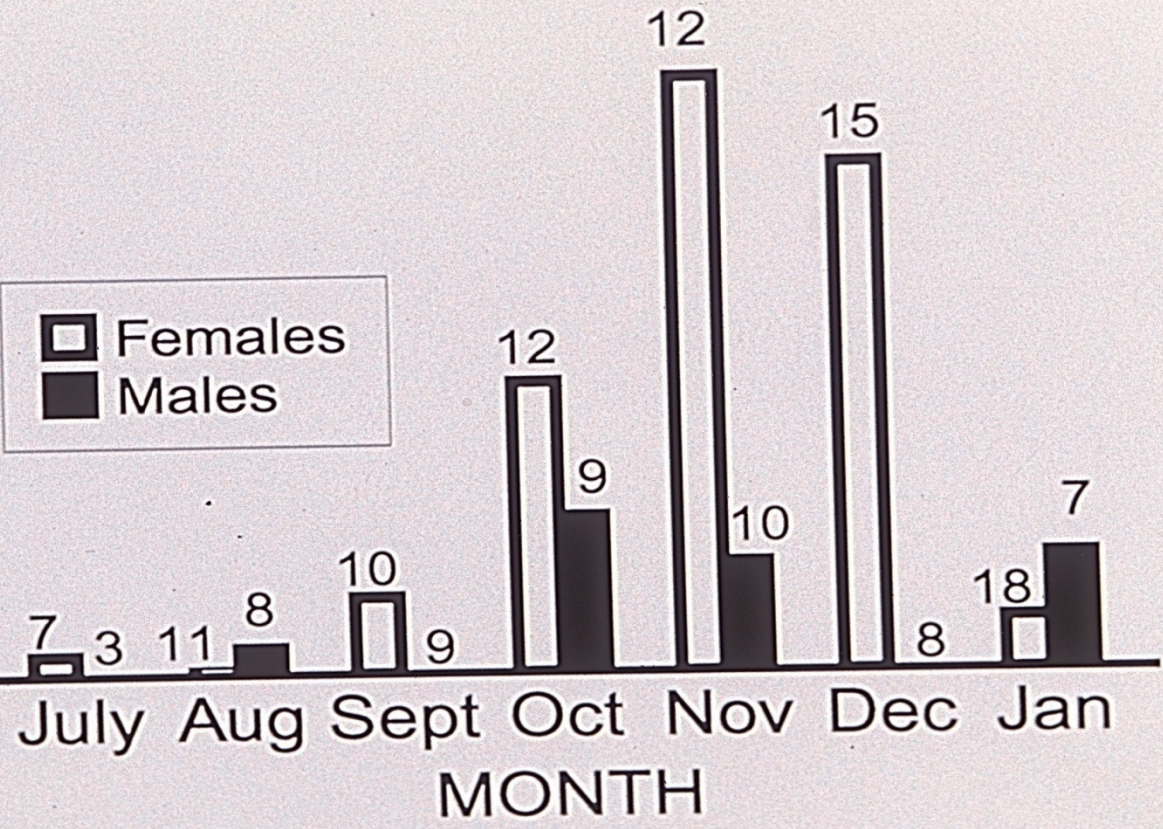




PITS / DOG / 100 SQ. M / DAY

20  
15  
10  
5  
0

□ Females  
■ Males







































































©bbbrisingphotography





















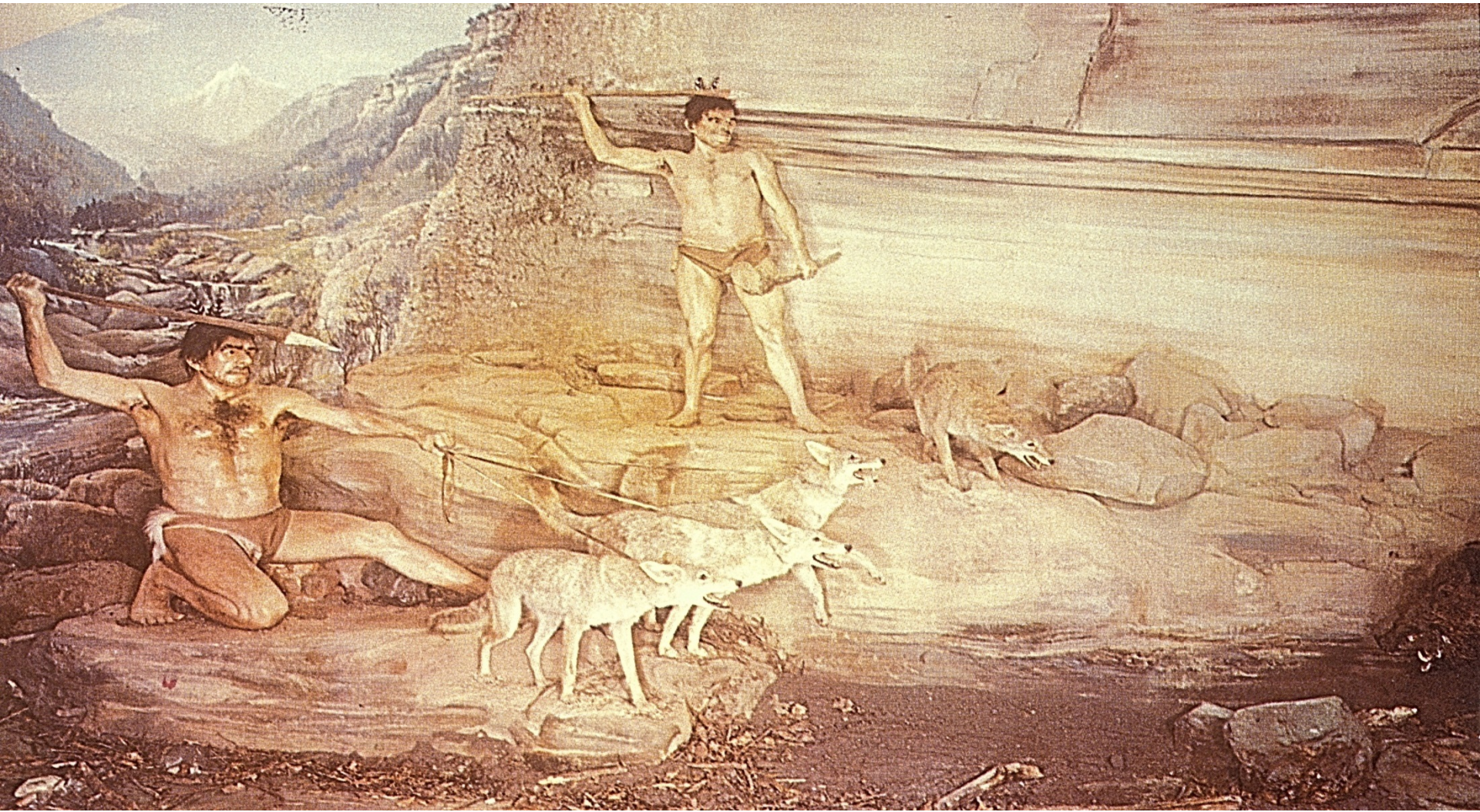
























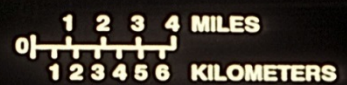
Juvenile Wild Dog on Isabela. *Photo by Tui Moore*





©dbbrishinphotography















SAVANNAH RIVER  
ECOLOGY LABORATORY  
OF THE  
U. S. ATOMIC  
ENERGY COMMISSION  
OPERATED BY THE  
UNIVERSITY OF GEORGIA

