

# **Salt Waste Processing Facility Project**

## **SRS Citizens Advisory Board Meeting September 23, 2008**

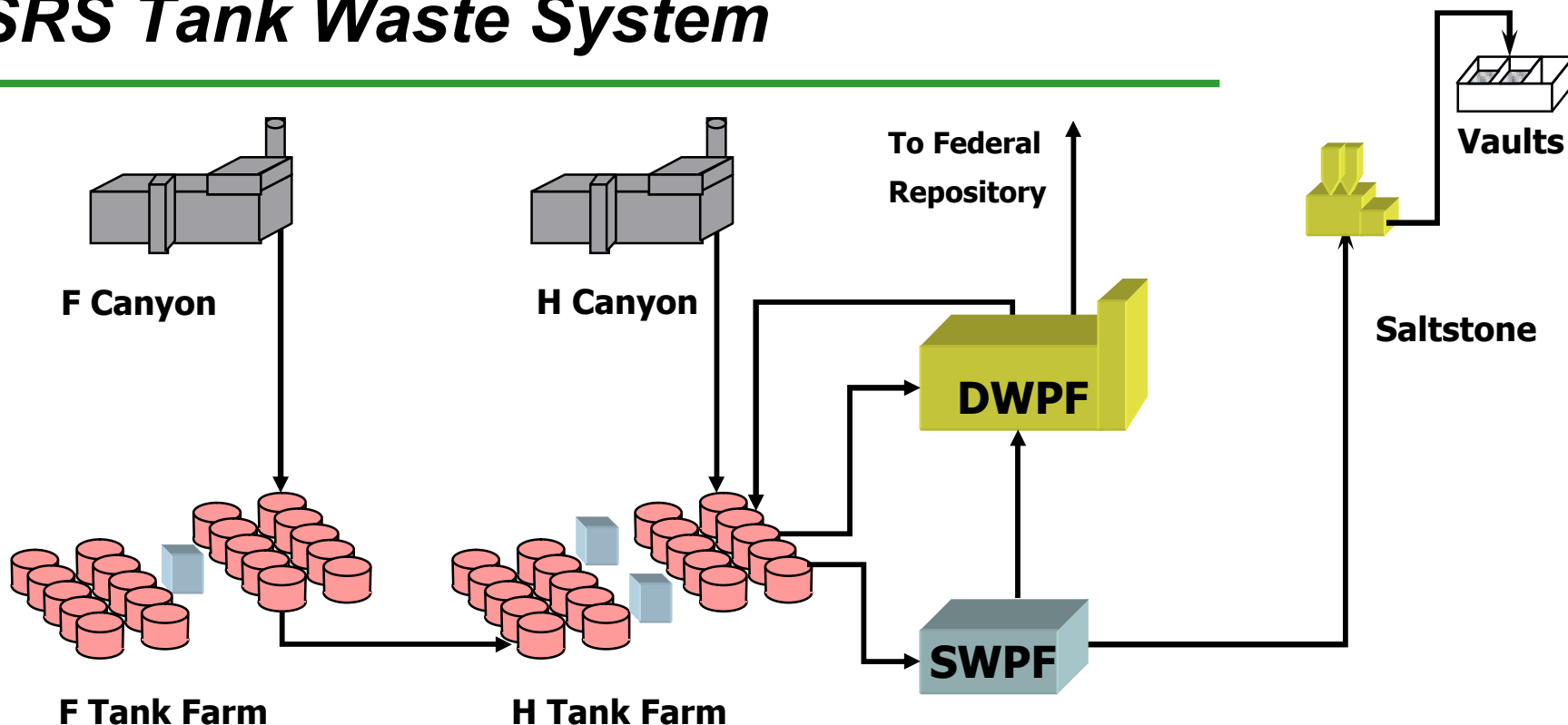
Zack Smith  
Federal Project Director



**EM** *Environmental Management*

safety ❖ performance ❖ cleanup ❖ closure

# SRS Tank Waste System



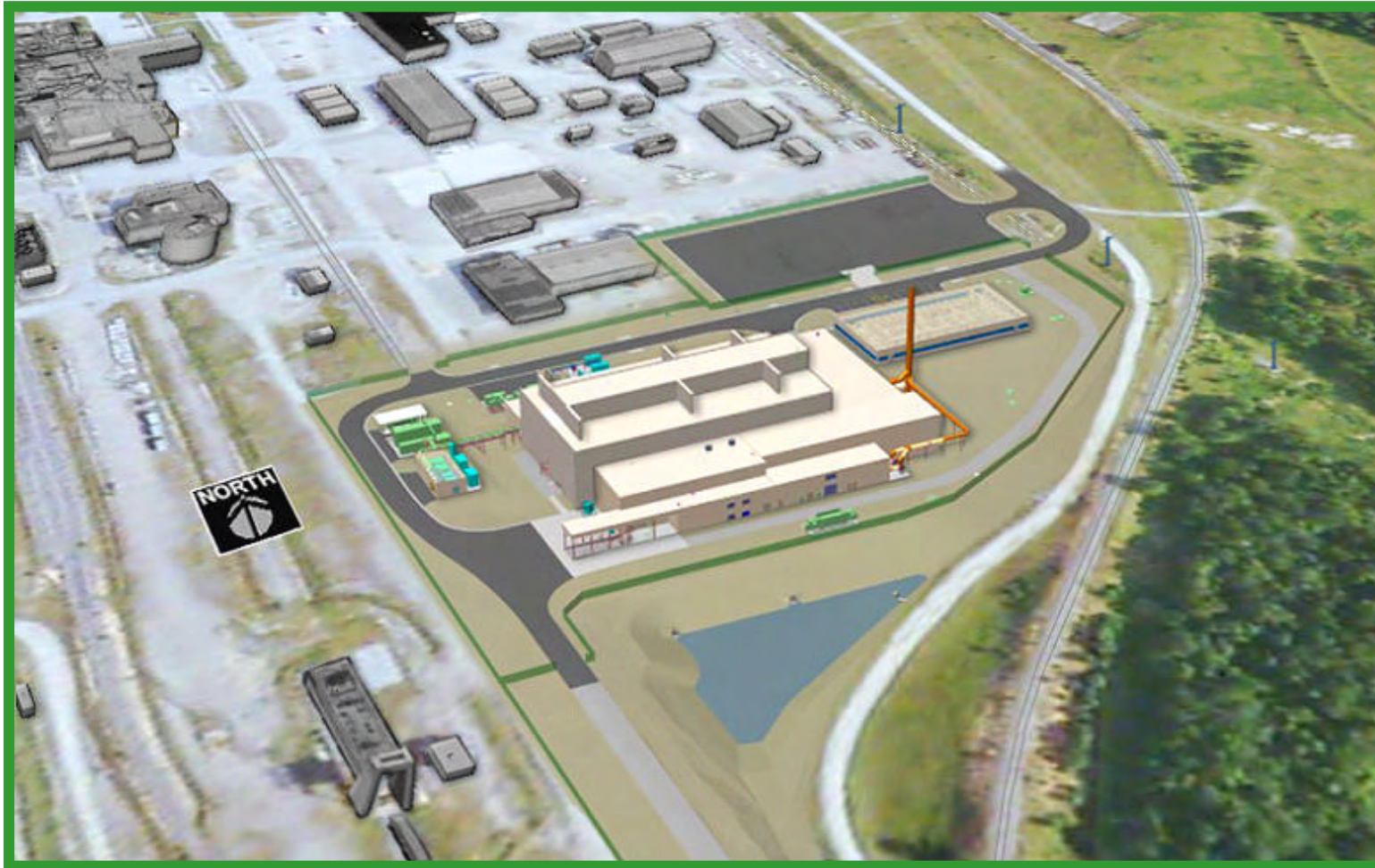
**DWPF - Defense Waste Processing Facility**  
**SWPF - Salt Waste Processing Facility**



**EM** *Environmental Management*

safety ❖ performance ❖ cleanup ❖ closure

# SWPF Project Layout

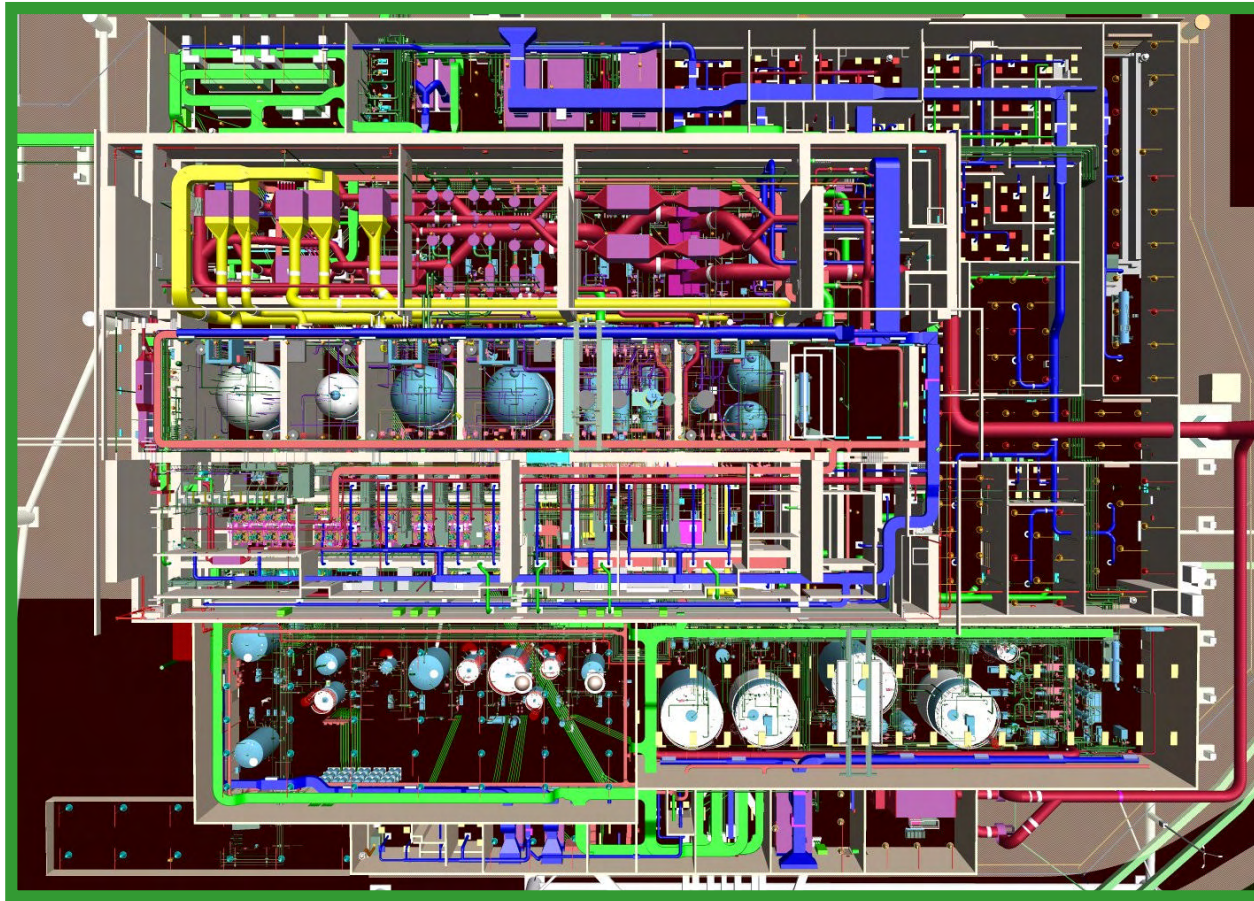


**EM** Environmental Management

safety ❖ performance ❖ cleanup ❖ closure



# SWPF Plan View



**EM** *Environmental Management*

safety ❖ performance ❖ cleanup ❖ closure

# Overall Project Status

---

- Design completion review in progress.
- Limited construction and early procurement work underway
  - Critical Decision 3-A – Limited Construction and early procurements approved September 24, 2007
  - Final construction permit received early August 2008
  - Critical Decision 3-B - verbal approval received from Deputy Secretary on September 2, 2008
- Critical Decision 3 External Independent Review started September 15, 2008.



**EM** *Environmental Management*

safety



performance



cleanup



closure

# Recent Project Reviews

---

- **Earned Value Management System Certification**
  - On Site Review April 2008 - System Certified July 2008
- **External Independent Review: CD-3B**
  - On Site Review May 2008
  - Scope and Cost validated
  - Final Report Issued July 2008
- **Construction Readiness Review**
  - Completed June 2008
  - Focused on ability to support critical path construction work
  - Also addressed safety, quality assurance and constructability
- **DNFSB Oversight**
  - Issued Structural Calculations
  - Received comments - no significant issues
  - Final face to face meeting forecast September 2008
  - Resolution of comments prior to concrete placement



**EM** *Environmental Management*

safety ❖ performance ❖ cleanup ❖ closure

# **Actinide Removal Process/Modular Caustic Side Solvent Extraction Unit (ARP/MCU)**

- ARP/MCU began hot operations on April 21, 2008.
- ARP/MCU acquired knowledge:
  - SWPF comparable components will operate as designed.
  - Importance of coalescer accessibility.
  - Stainless steel media.
  - Solids not as much of a problem on actual waste.
- SWPF and ARP/MCU Interfaces:
  - Weekly plan of the week meetings
  - Monthly technology meetings
  - Special meetings as deemed appropriate
  - Many routine interfaces



**EM** *Environmental Management*

safety



performance



cleanup



closure

# Construction Update

---

- Significant Accomplishments
  - Fabricating Rebar
  - Requisitioning Wall Embeds and Penetration Sleeves
  - Admin Building – Scheduled construction occupancy 10/15/08
    - Roof and Siding
    - Electrical Rough In
    - Interior Finishes 80% Complete
- Current Activities
  - Basemat Construction started
    - Actinide Sorption Drain Tank and Waste Transfer Enclosure depressed cells rebar placement – 40% Complete
    - Basemat rebar started 9/9/08



**EM** Environmental Management

safety ❖ performance ❖ cleanup ❖ closure



# SWPF J Area Aerial Progression



**EM** Environmental Management

safety ❖ performance ❖ cleanup ❖ closure



# Storm Drain Outlet to Sediment Pond



**EM** *Environmental Management*

safety ❖ performance ❖ cleanup ❖ closure



# ***Completed Spillway and Sediment Pond***



***EM Environmental Management***

safety ❖ performance ❖ cleanup ❖ closure

# ***SWPF Central Processing Area - Basemat Formwork***



**EM** *Environmental Management*

safety ❖ performance ❖ cleanup ❖ closure



# ***SWPF Central Processing Area - Basemat Formwork***

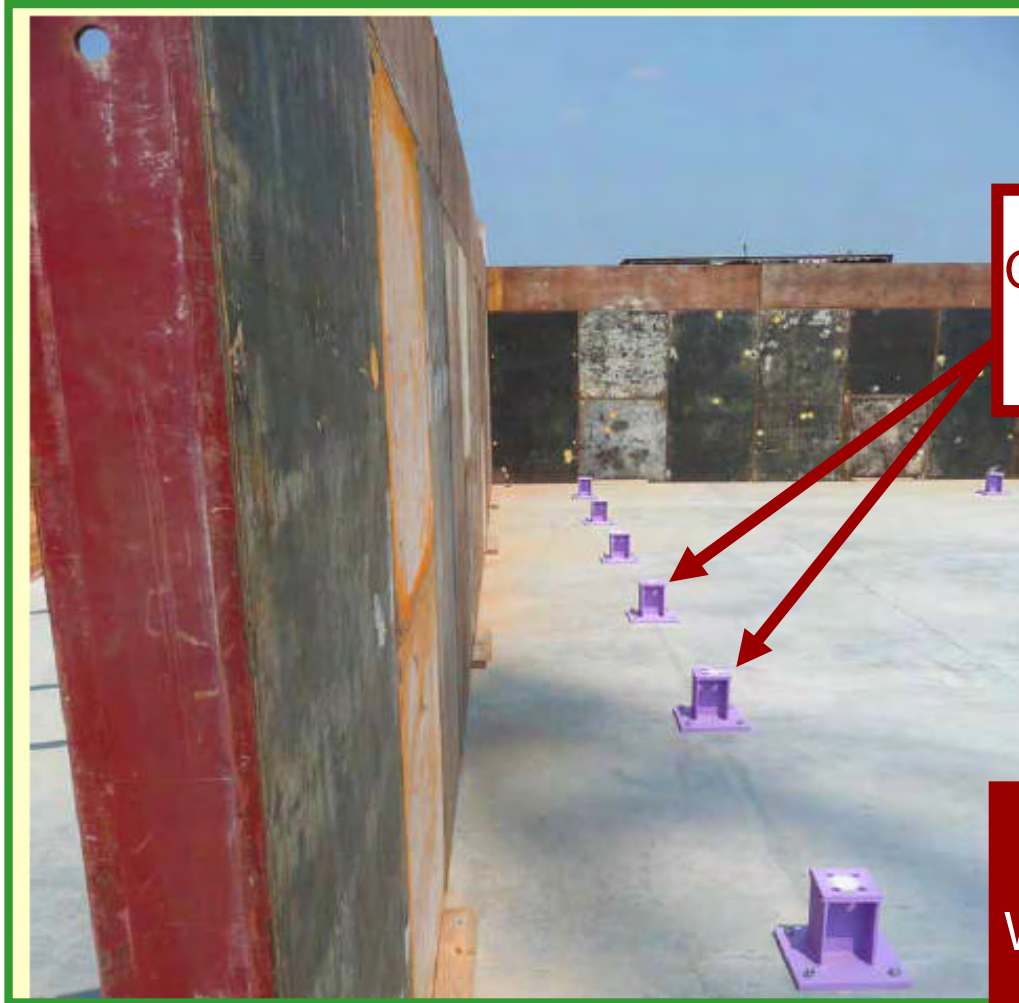


***EM*** *Environmental Management*

safety ❖ performance ❖ cleanup ❖ closure



# ***SWPF Central Processing Area – Basemat Formwork***



Construction Aid  
Steel (typ)

Exterior Edge Forms  
West and North Edges



***EM*** ***Environmental Management***

safety ❖ performance ❖ cleanup ❖ closure

## ***Contactor Foundations – Fabricated at Vendor Facility***



***EM Environmental Management***

safety ❖ performance ❖ cleanup ❖ closure



## ***Contactor Support Base – Fabricated at Vendor Facility***



***EM Environmental Management***

safety ❖ performance ❖ cleanup ❖ closure

## ***Summary***

---

- Design completion review in progress.
- Critical Decision 3 External Independent Review in progress.
- Basemat Rebar placement started.
- Concrete placement for Central Processing Area basemat - October 2008.
- Will keep CAB informed of progress.



***EM** Environmental Management*

*safety*



*performance*



*cleanup*



*closure*