



# Natural Resources Management Plan For the Savannah River Site, May 2005: Update

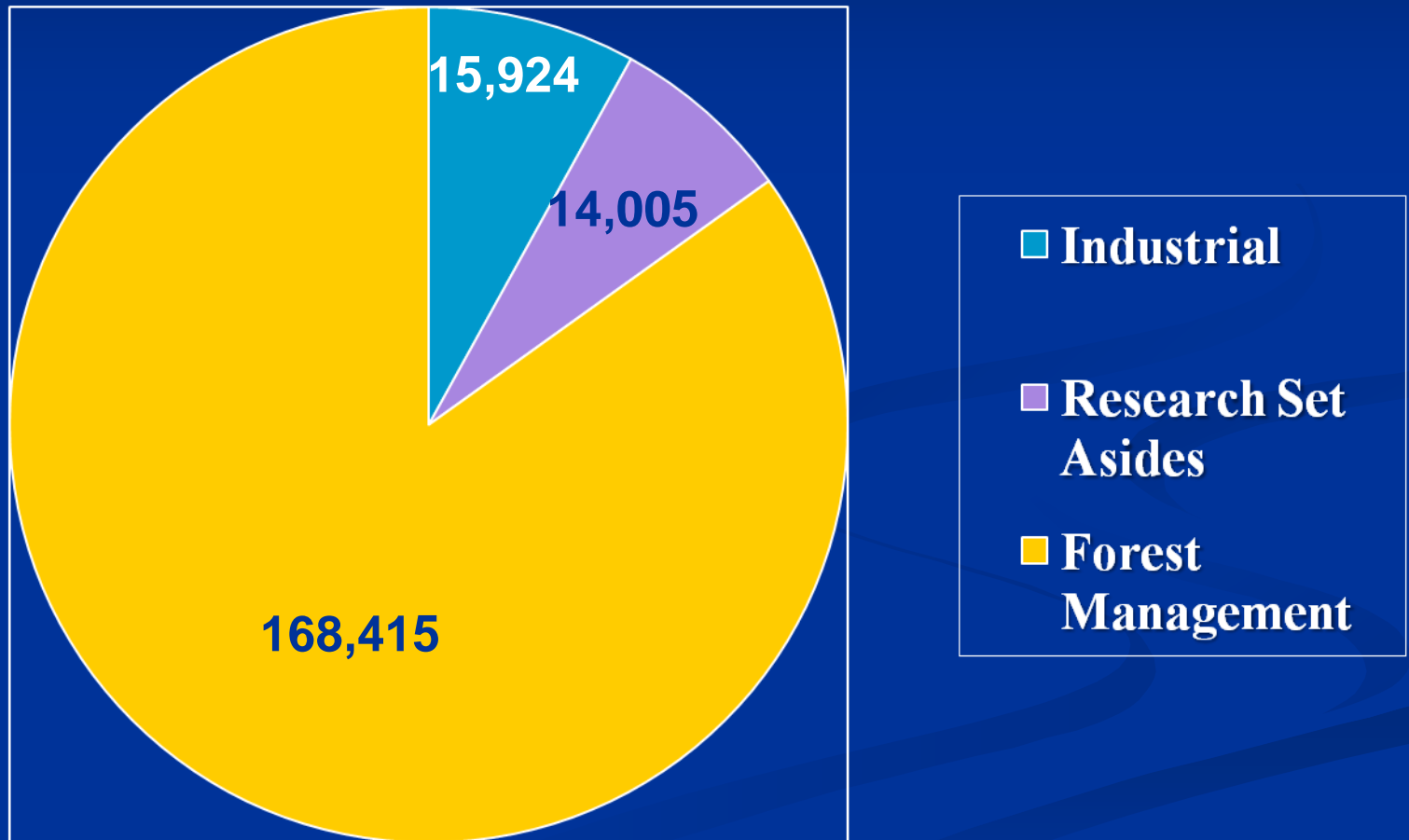
## USDA Forest Service-Savannah River

October 27, 2009

# Guidance

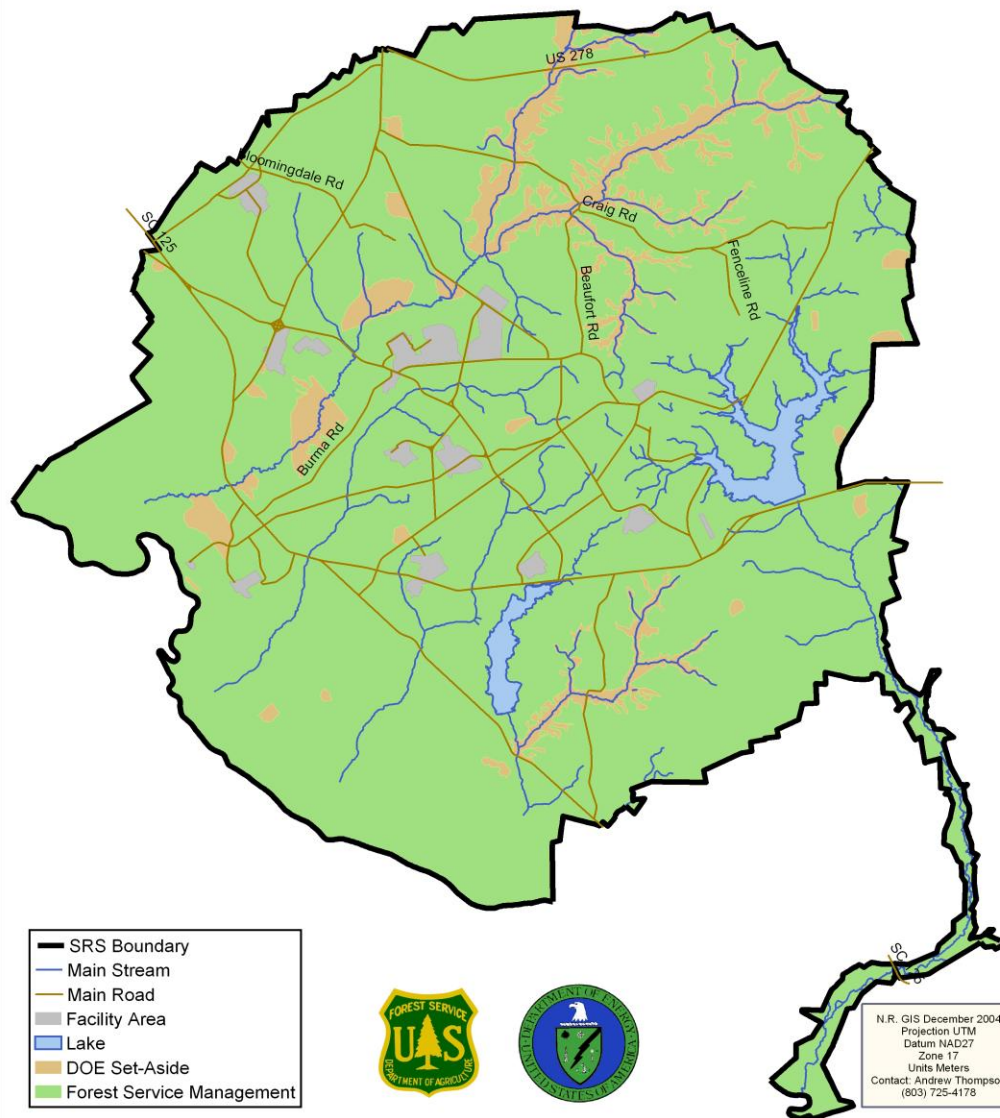
## Natural Resources Management Plan For the Savannah River Site May 2005 (NRMP)

# Land Uses at SRS



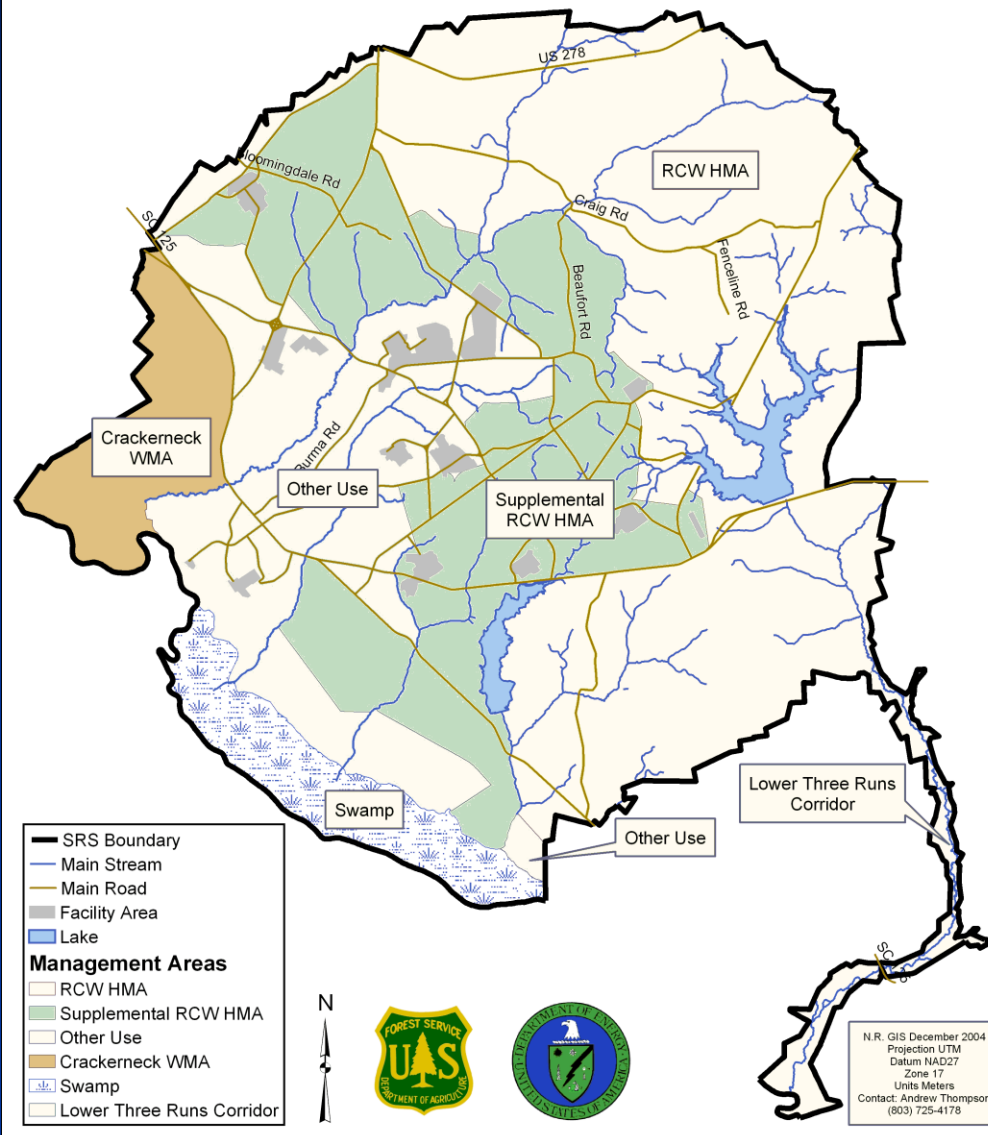
October 27, 2009

# SRS Land Use



October 27, 2009

# SRS Management Areas

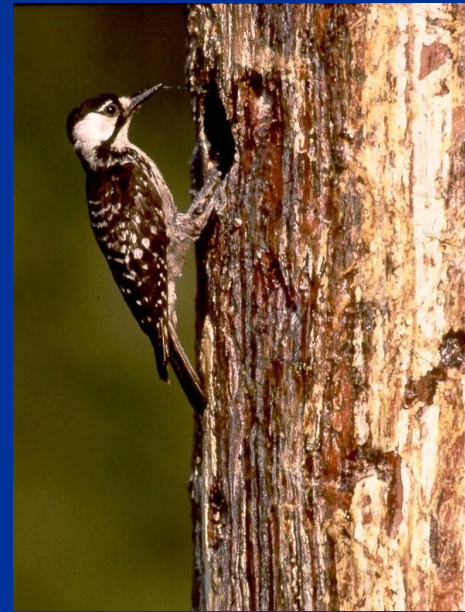


October 27, 2009

# **Management for all Threatened, Endangered, Sensitive and Rare plants found at SRS**

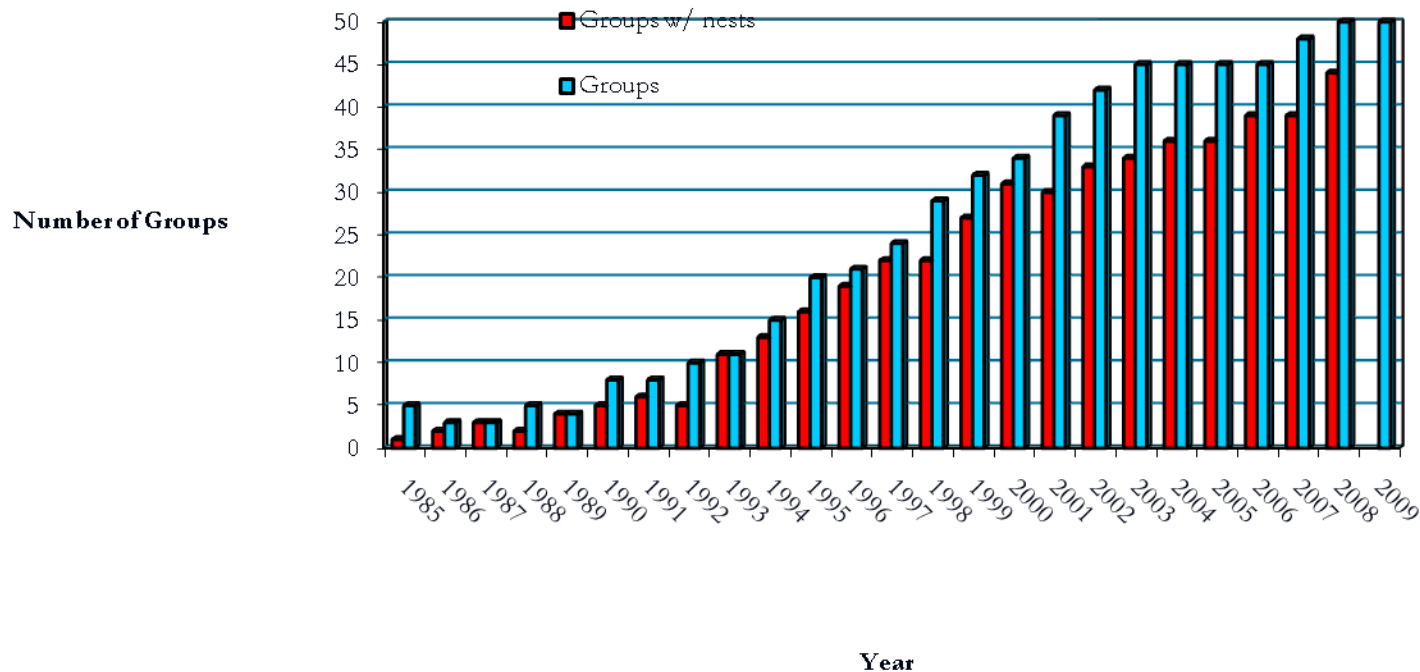


**Smooth purple coneflower**



**Red-cockcaded woodpecker**

# Maintained and improved habitat to meet recovery population objectives for RCW



# Slash Pine



# Longleaf Pine



October 27, 2009

# Reduce hazardous forest fuel accumulations: Prescribed Fire

- **27,263 acres in FY09**
- **Also, 109 acres for site preparation,**
- **And, 96 acres for research projects**



# Before Prescribed Fire

October 27, 2009



# After Prescribed Fire

October 27, 2009



**Natural Resources  
Management Plan for SRS:  
No significant changes anticipated at this  
time.**

October 27, 2009