

Salt Waste Processing Facility Project

SRS Citizens Advisory Board Waste Management Committee Meeting September 1, 2009

Zack Smith
Federal Project Director



EM *Environmental Management*

safety ❖ performance ❖ cleanup ❖ closure

SWPF Progress

September 2007	Deputy Secretary approved project baseline and limited construction
August 2008	Started basemat rebar installation
December 2008	Deputy Secretary approved full construction
January 2009	First basemat concrete placed
August 2009	Basemat 100% complete. <ul style="list-style-type: none">-10,200 cubic yards of concrete placed-1,200 concrete trucks-Equal to a football field 6 feet deep in concrete-Embedded are 1,500 tons of reinforcing steel rod.-End to end, steel stretches 150 miles



EM *Environmental Management*

safety ❖ performance ❖ cleanup ❖ closure

SWPF BASEMAT PROGRESS



July 2009



April 2009



Placement #3 Cutaway



June 2009



EM Environmental Management

safety ❖ performance ❖ cleanup ❖ closure

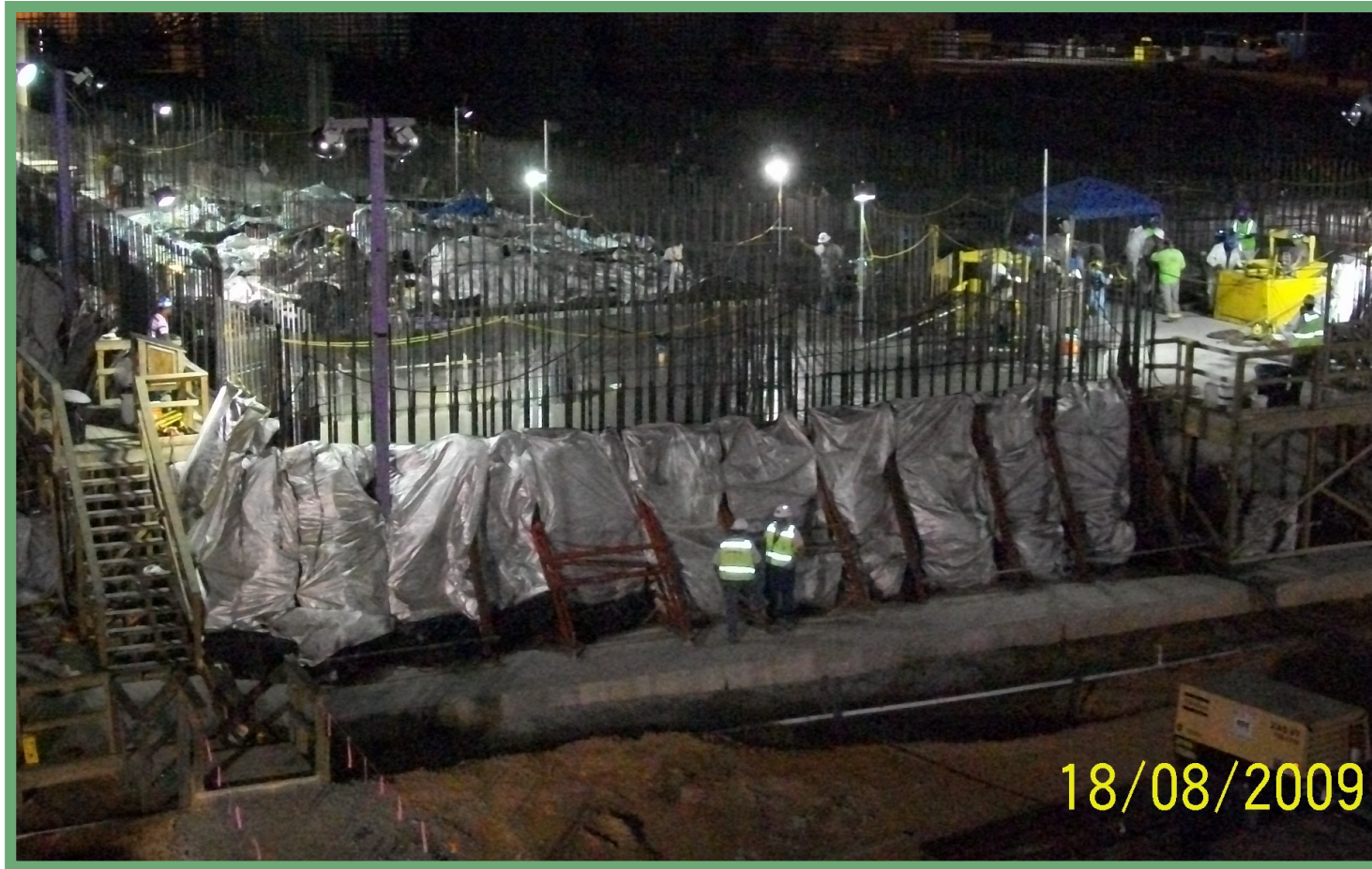
Final Basemat Concrete Placement



EM *Environmental Management*

safety ❖ performance ❖ cleanup ❖ closure

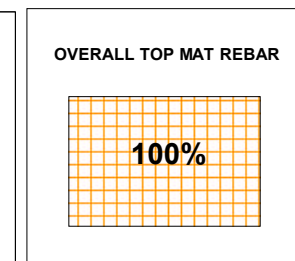
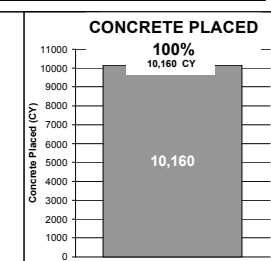
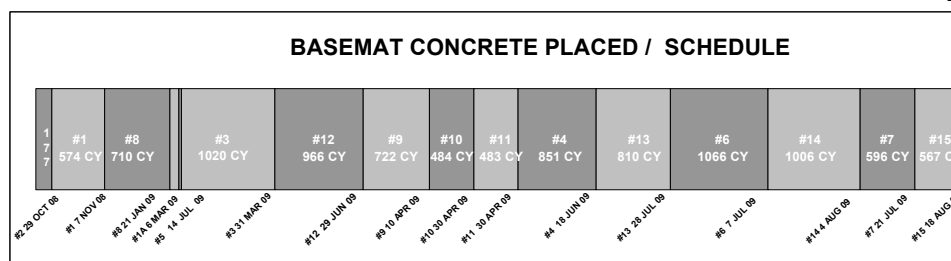
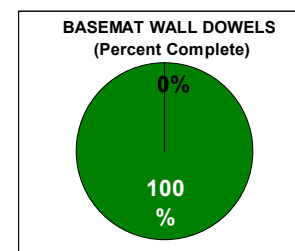
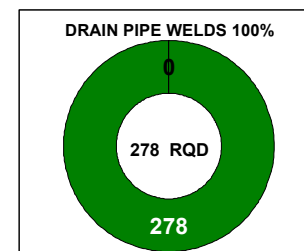
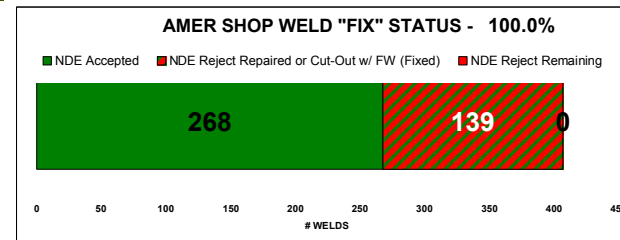
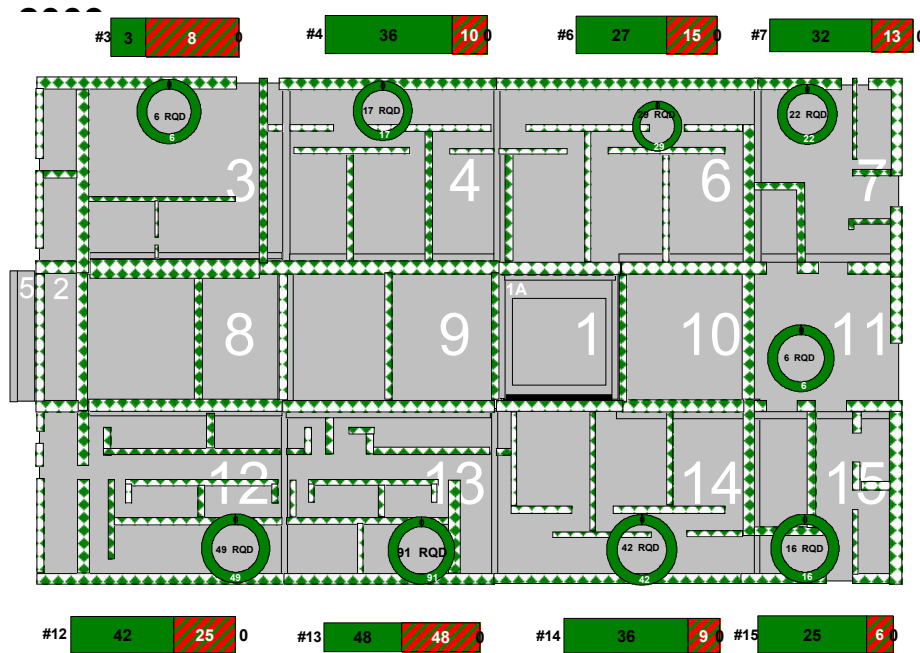
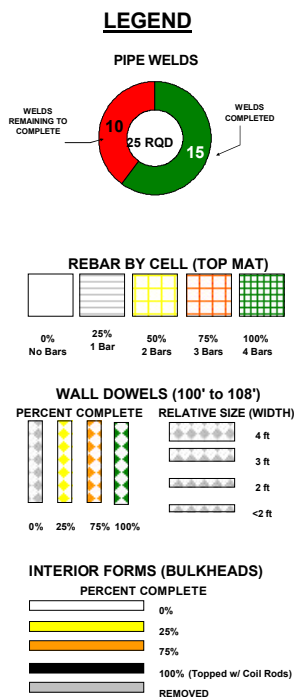
Final Basemat Concrete Placement



EM *Environmental Management*

safety ❖ performance ❖ cleanup ❖ closure

SWPF BASEMAT COMPLETION STATUS AS OF 18 AUGUST



BASEMAT COMPLETED



EM Environmental Management

safety ♦ performance ♦ cleanup ♦ closure

Planned Activities

August 2009	Initiated facility wall placements
March 2010	Deck at 116' complete
July 2010	Complete Delivery of Large ASME Vessels
December 2010	Complete Contactor Setting
December 2011	Complete facility roof
September 2012	Construction complete
July 2013	Commence hot operations



EM *Environmental Management*

safety ❖ *performance* ❖ *cleanup* ❖ *closure*